

# Ejjab aolep ien kwonaaj jelã rajia rot ko rekabobo.



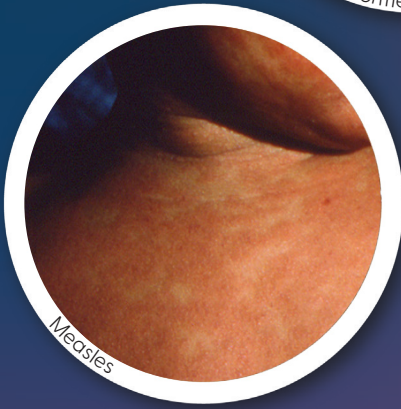
Erythema Multiforme



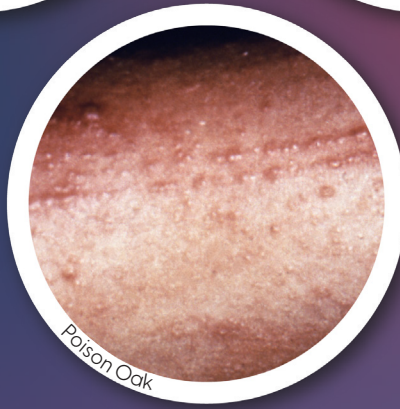
Shingles



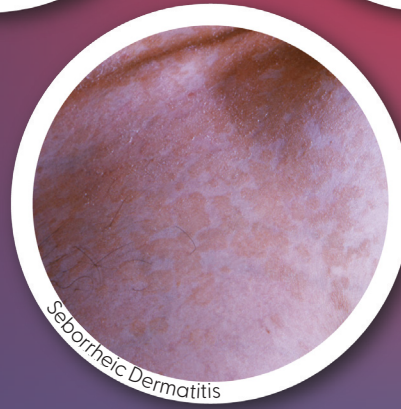
Scabies



Measles



Poison Oak



Seborrheic Dermatitis

Source for Images (Pi ja ko)  
CDC Public Health Image  
Library (PHIL, Pi ja ko)

Konke kwojjab maroñ lukkun jelã ta eo ej kōman bwe en wor rajia, kwoj aikwij emakit im loor wewen kein ñan kejbarok rinaninmij ro im kwe bwe en jab ajeded kij ko.



Kejbarok im karreoik rajia ko ilo kiil me emoj aer jar; ijo in me ebidodo an kij ko deloñ ilo enbwin juon rinaninmij.



Kojerbal kloop ko ñe kwoj jibwe juon eo e rajia, ñan kejbarok jen kij ko, im kejbarok jen an ajeded.



Karreo im karreoiki kin chemical men ko rinaninmij eo ear jibwi.

ÑAN KALAPLOK MELELE

KijKo Rej Mour ijo me rej ba Skin infographic  
Gloves and Gowns Session Plan  
Environmental Cleaning and Disinfection Session Plan